

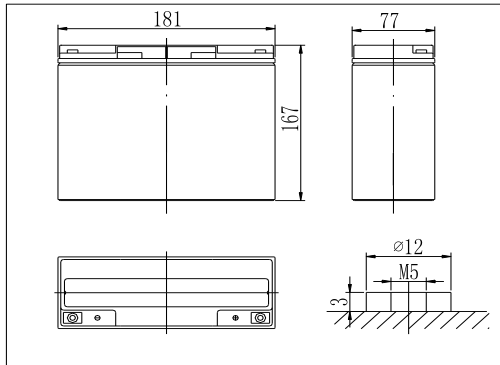
RPower GiV12180V (12V 18Ah AGM Battery)

VdS No. G108043

EAN: 4260123682392

Floating Life at 20°C designed for up to 5 years

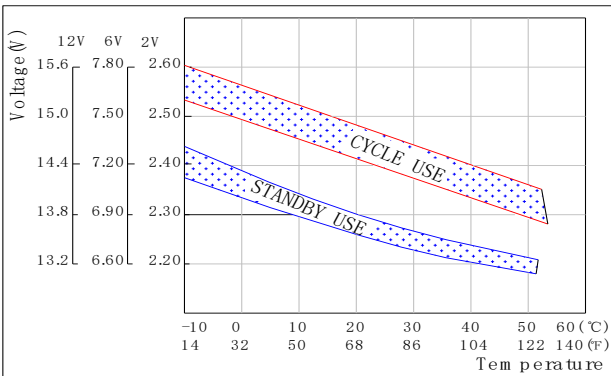
Dimensions



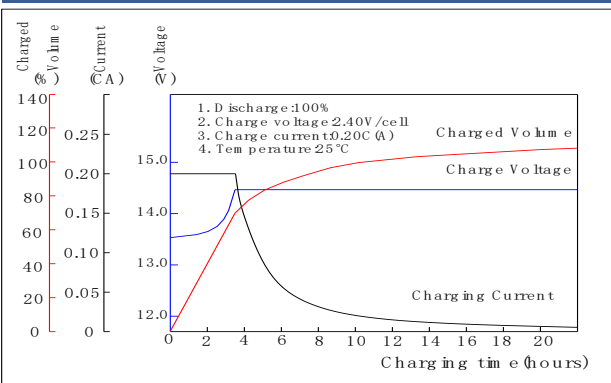
Specifications

Nominal Voltage		12V
Capacity (20hr@25°C@1.75V/C)		18Ah
Dimensions (±2mm)	Length	181mm (7.13inch)
	Width	77mm (3.03inch)
	Height	167mm (6.57inch)
	Total Height	167mm (6.57inch)
Approx. Weight		5.30kg (11.68lbs)
Maximum charging current		5.4A
Maximum discharge current		270A (5sec.)
Internal resistance		Approx. 16mΩ
Capacity affected by temperature (20hr)	40°C	102%
	25°C	100%
	0°C	85%
	-15°C	65%
Self-discharge (25°C)	3 month	Remaining Capacity: 91%
	6 month	Remaining Capacity: 82%
	12 month	Remaining Capacity: 65%
Nominal operating temperature		25°C ±3°C (77°F±5°F)
Operating temperature range		-20°C~50°C (-4°F~122°F)
Float charging voltage (25°C)		13.65 to 13.80V
Cyclic charging voltage (25°C)		14.40 to 15.00V
Terminal material		Copper

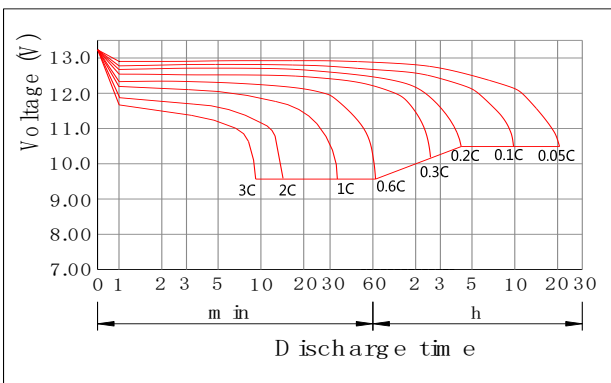
The Relationship for Charging Voltage and Temperature



Charging Characteristics (25°C)



Discharge Characteristics (25°C)



Constant Current Discharge Characteristics (Ampere / Battery, 25°C)

FV / TIME	5min	10min	15min	20min	30min	45min	1h	2h	3h	4h	5h	6h	8h	10h	20h
10.98V	56,10	35,40	28,70	21,60	16,60	12,90	10,50	5,97	4,31	3,49	2,95	2,32	1,88	1,63	0,89
10.80V	57,90	36,50	29,60	22,30	17,20	13,10	10,70	6,09	4,40	3,52	2,98	2,35	1,90	1,65	0,90
10.50V	61,20	38,80	31,40	23,60	17,80	13,60	11,10	6,25	4,53	3,63	3,09	2,44	2,01	1,70	0,90
10.20V	64,00	40,40	32,40	24,40	18,30	13,90	11,30	6,35	4,55	3,65	3,11	2,45	2,01	1,70	0,90
9.90V	66,90	42,20	33,70	25,30	18,80	14,30	11,60	6,40	4,60	3,68	3,14	2,46	2,02	1,70	0,93
9.60V	68,90	43,50	34,50	25,90	19,20	14,60	11,80	6,43	4,63	3,70	3,14	2,49	2,06	1,72	0,93

Constant Power Discharge Characteristics (Watt / Battery, 25°C)

FV / TIME	5min	10min	15min	20min	30min	45min	1h	2h	3h	4h	5h	6h	8h	10h	20h
10.98V	623,00	397,00	325,00	245,00	189,00	147,00	122,00	69,40	50,90	41,20	35,00	27,80	22,80	19,50	10,50
10.80V	642,00	409,00	335,00	253,00	195,00	150,00	124,00	70,80	51,90	41,60	35,40	28,10	23,00	19,70	10,60
10.50V	680,00	434,00	354,00	267,00	203,00	155,00	127,00	72,60	53,50	42,90	36,50	28,80	23,80	20,10	10,80
10.20V	706,00	453,00	366,00	276,00	208,00	159,00	130,00	73,70	53,80	43,20	36,80	29,10	23,90	20,20	10,90
9.90V	741,00	473,00	381,00	287,00	214,00	163,00	133,00	74,40	54,20	43,50	37,00	29,40	24,10	20,30	10,90
9.60V	762,00	487,00	390,00	293,00	219,00	166,00	135,00	74,80	54,50	43,70	37,30	29,50	24,20	20,40	11,00